

STYLE 85

INSTALLATION INSTRUCTIONS

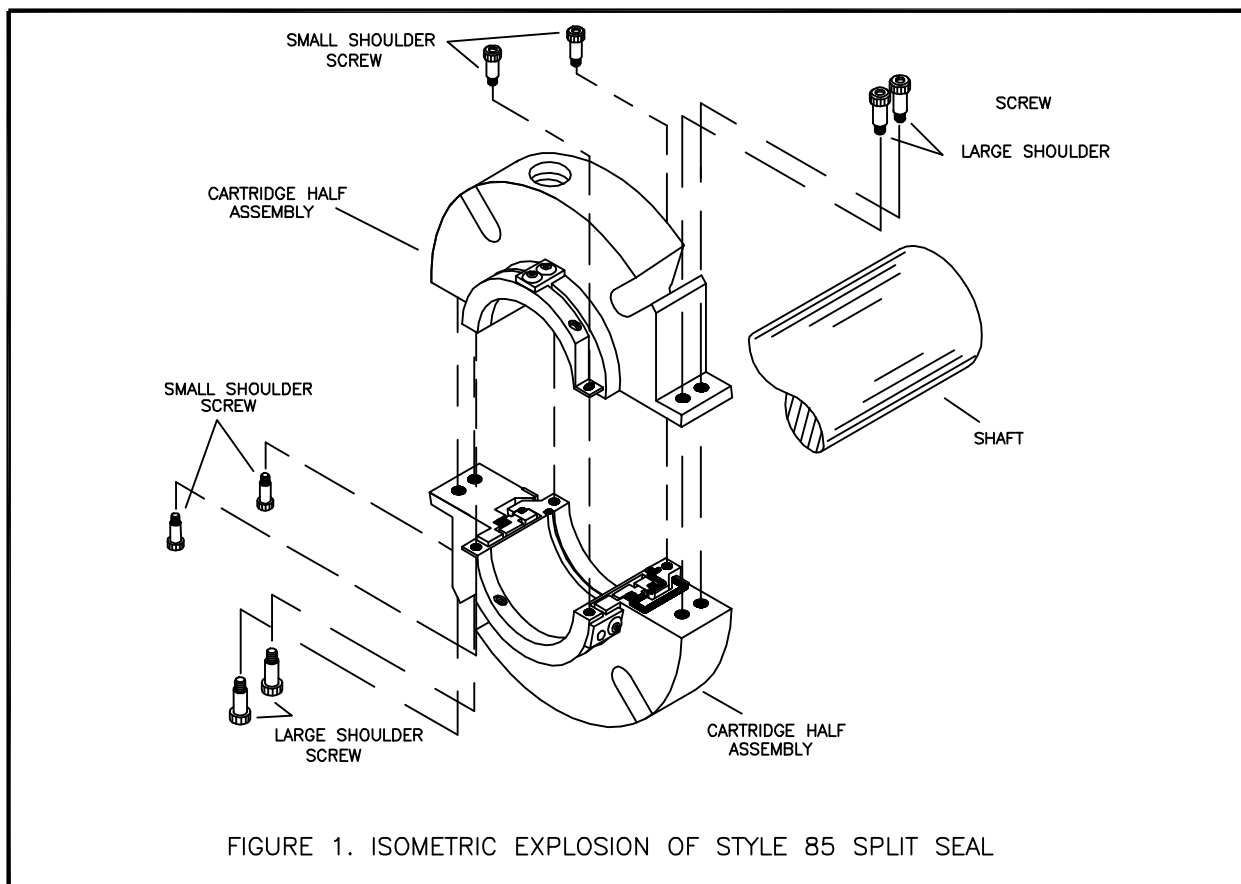
U.S. PATENT NO. 5,662,340

I. CONTENTS OF BOX

BEFORE STARTING: REVIEW ASSEMBLY DRAWING FOR ANY SPECIAL ASSEMBLY NOTES.
MAKE SURE YOU HAVE THE FOLLOWING PARTS. (SEE FIGURE 1)

CARTRIDGE HALF ASSEMBLY	2
SMALL SHOULDER SCREWS	4
LARGE SHOULDER SCREWS	4
ALLEN WRENCH(S)	SEE NOTE

NOTE: ONLY (1) 1/8" ALLEN WRENCH IS REQUIRED FOR SIZES 1 3/4" TO 3".
1/8" AND 3/16" ALLEN WRENCHES ARE REQUIRED FOR SIZES 3 1/8" TO 4 3/4"
1/8" AND 1/4" ALLEN WRENCHES ARE REQUIRED FOR SIZES 5" TO 6 1/2" (ABOVE 6 1/2" MAY REQUIRE ADDITIONAL 3/16" WRENCH)



II. PREPARATION OF EQUIPMENT FOR SEAL INSTALLATION

- REMOVE OLD SEAL/PACKING METHOD. CLEAN SHAFT AND STUFFING BOX FACE. THESE SURFACES MUST BE FREE OF PAINT, RUST AND BURRS TO PROVIDE A SUITABLE SEALING SURFACE.
- CHECK SHAFT FOR EXCESSIVE WEAR AND RUNOUT. FOR BEST SEALING RESULTS, THE RUNNOUT BETWEEN THE SHAFT AND BOX FACE SHOULD NOT EXCEED .005".

FLEX-A-SEAL, INC.

1 JACKSON ST./P.O. BOX 184
ESSEX JUNCTION, VT 05453
(802) 878-8307

SK1070

STYLE 85

INSTALLATION INSTRUCTIONS

U.S. PATENT NO. 5,662,340

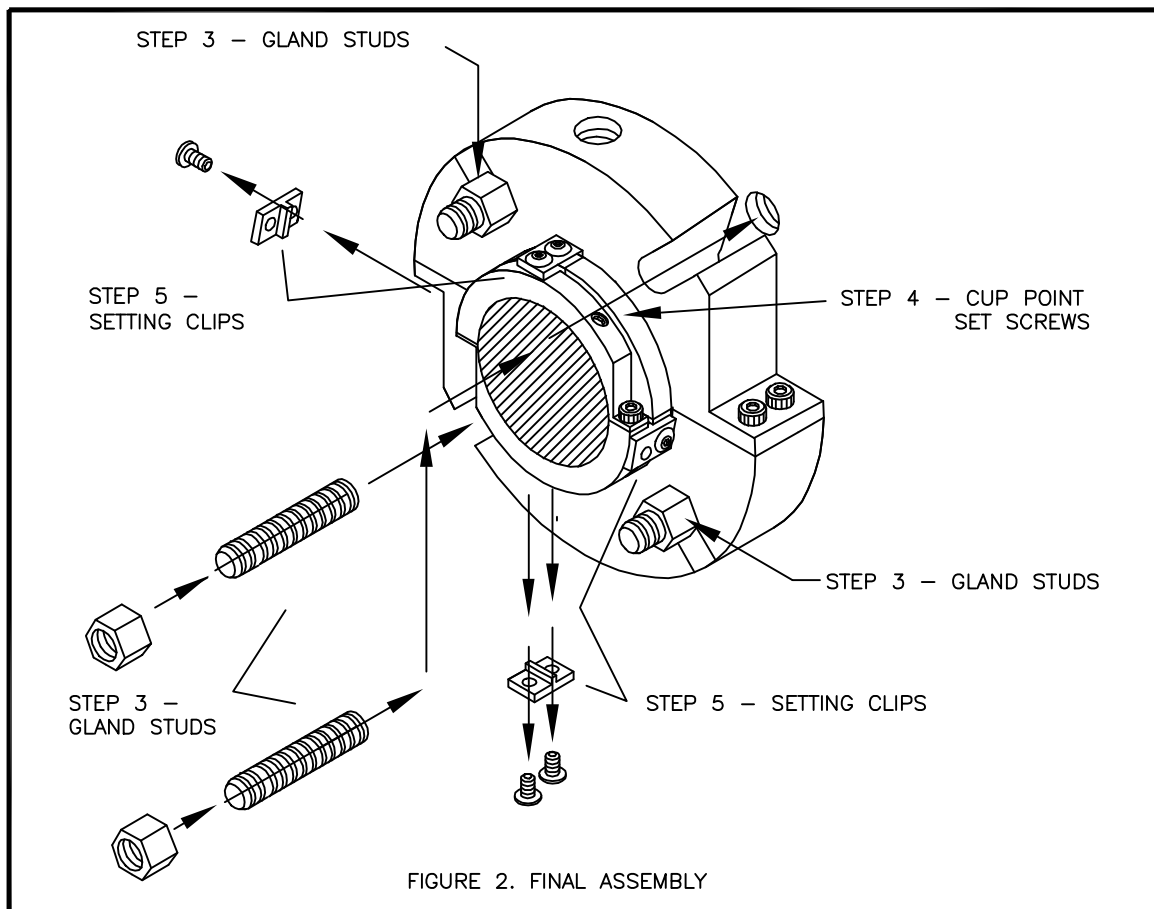
III. INSTALLATION OF STYLE 85 SPLIT SEAL.

A. PREPARING SEAL FOR INSTALLATION.

1. LUBE SLEEVE O'RING - **BE VERY CAREFUL NOT TO GET ANY LUBE ON ENDS OF O'RINGS WHERE THEY ARE SPLIT.**
2. PLACE ALLEN WRENCH(S), GLAND STUDS, CARTRIDGE HALF ASSEMBLIES, SMALL AND LARGE SHOULDER SCREWS NEXT TO WORK AREA.

IV. ACTUAL ASSEMBLY OF SEAL (COUNT THE STEPS)!!

1. HOLD BOTTOM HALF UP AGAINST SHAFT. CAREFULLY ALIGN TOP HALF USING PINS MAKING SURE NEVER TO RELEASE PRESSURE OF BOTTOM HALF AGAINST THE SHAFT. START THE (4) LARGE SHOULDER SCREWS IN GLAND HOLES AND THE (4) SMALL SHOULDER SCREWS IN SLEEVE AND TIGHTEN ALL FINGER TIGHT. **(YOU HAVE NOW COMPLETED THE MOST DIFFICULT PART OF THIS INSTALLATION).**
2. USING ALLEN WRENCH(S), TIGHTEN ALL (8) SHOULDER SCREWS ALTERNATELY UNTIL SECURE.
3. PUT GLAND STUDS BACK IN AND TIGHTEN ALTERNATELY UNTIL SECURE (SEE FIGURE 2).
4. TIGHTEN CUP POINT SET SCREWS ALTERNATELY UNTIL SECURE.
5. REMOVE SETTING CLIPS AND SPIN SHAFT TO CHECK FOR FREE ROTATION. **(HINT: SAVE FOR POSSIBLE REALIGNMENT REQUIREMENTS IN THE FUTURE).**



FLEX-A-SEAL, INC.

1 JACKSON ST./P.O. BOX 184
 ESSEX JUNCTION, VT 05453
 (802) 878-8307

SK1070