

Distributor	Contact	Phone N°
Location	E-Mail	
Customer	Contact	Phone N°
Location	E-Mail	

PROCESS FLUID & OPERATING CONDITIONS

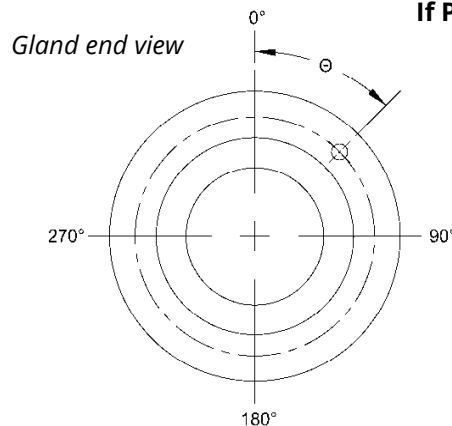
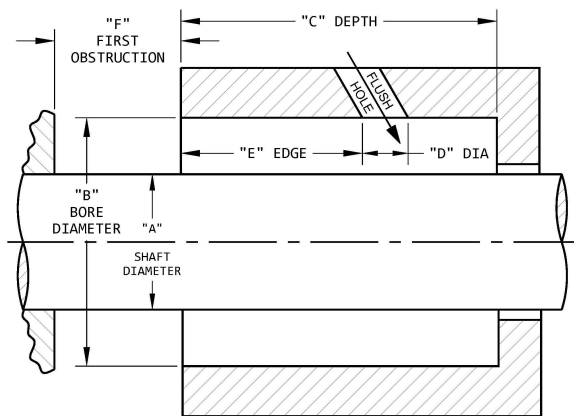
Product, % concentration, & pH		Additional notes	
S.G.	Clean	Cont.	
Viscosity	Dirty	Batch	
Solids size, %	Abrasive	Environmental Controls	Flush Piping Plan
Temperature Min.	Crystallizing		Sealing Fluid
Norm.	Toxic		Viscosity
Max.	Corrosive		Pressure
	Hardening		Temperature
	Explosive		
Shaft Speed	Process Pressure		
	Vapor	Seal chamber	Suction Discharge

EQUIPMENT INFORMATION

Pump	Mixer	Equipment Orientation	Seal chamber modifications
Other:		Horizontal Vertical	
Manufacturer		Seal Chamber Type	
Model		Standard bore	Additional notes
Size		Big bore	
N° of stages		Taper bore	
Material Sleeve		Other:	Item N°
Casing		Runout Radial	Axial

SEAL CHAMBER DATA

Modify sketch as necessary.



If PowerGland is requested:

- Bolt circle diameter
- Stud size & length
- Quantity
- Spacing, Θ
- Connection Locations**
- Flush Vent Drain

Include units

- A. Shaft Diameter
- B. Bore Diameter
- C. Box Depth
- D. Flush Port Diameter
- E. Depth to Flush Edge
- F. Dist. to First Obstruction

All dimensions here are required for a ViseSeal application.

Existing Sealing System	
Manufacturer	
Model	
Materials of construction	
Drawing N°	
Cause of failure	