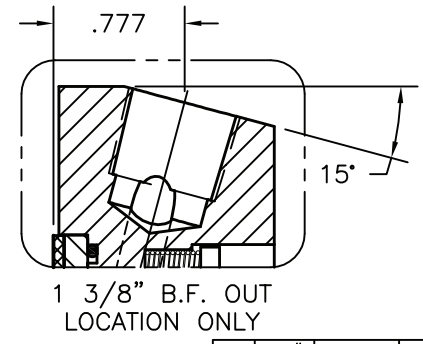
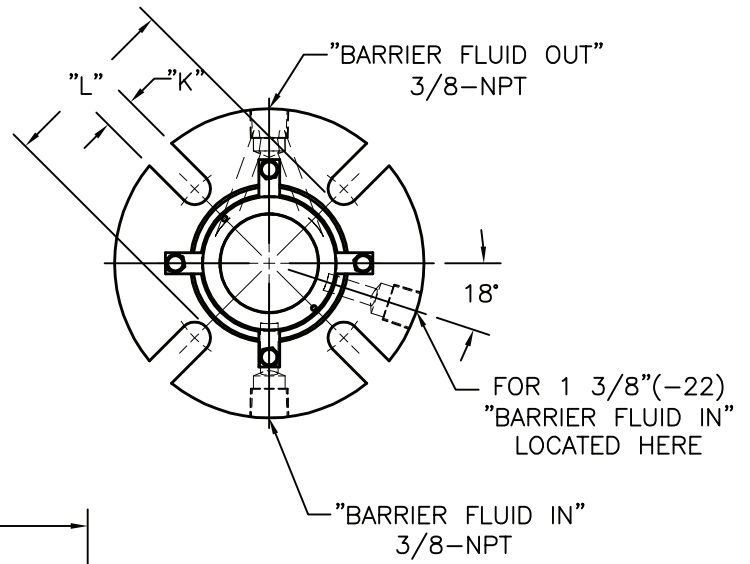
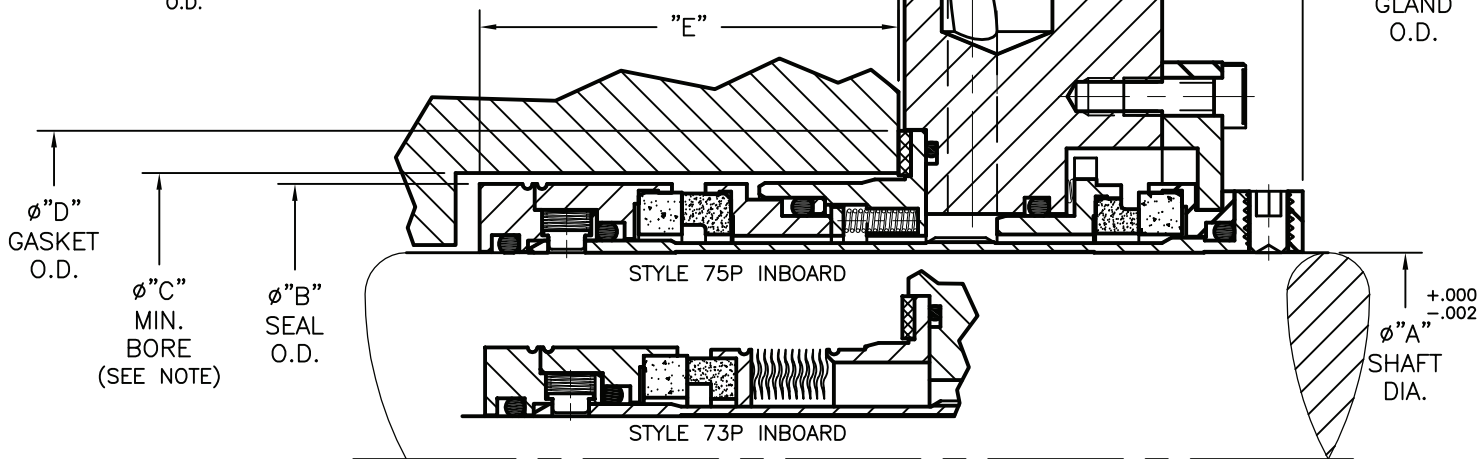


SIZE	A	B	C	D	E	F	G	H	J	K	L
-16	1.000	1.700	1.750	2.230	2.120	.500	1.340	2.063	4"	7/16	2.375
-18	1.125	1.700	1.750	2.230	2.041	.500	1.309	2.031	4 1/4	7/16	2.463
-20	1.250	1.950	2.000	2.355	2.120	.500	1.340	2.063	4 1/4	7/16	2.583
-22	1.375	1.950	2.000	2.480	2.041	.777	1.309	2.031	4 1/4	7/16	2.713
-24	1.500	2.200	2.250	2.605	2.120	.500	1.340	2.063	4 1/2	9/16	2.950
-26	1.625	2.325	2.375	2.855	2.120	.500	1.340	2.063	5"	9/16	3.075
-28	1.750	2.450	2.500	2.990	2.120	.500	1.340	2.063	5 1/2	9/16	3.188
-30	1.875	2.575	2.625	3.105	2.120	.500	1.340	2.063	5 1/2	9/16	3.313
-32	2.000	2.700	2.750	3.230	2.120	.500	1.340	2.063	5 1/2	9/16	3.570
-34	2.125	2.825	2.875	3.490	2.120	.500	1.340	2.063	6"	11/16	3.688
-36	2.250	2.950	3.000	3.605	2.120	.500	1.340	2.063	6 1/4	11/16	3.813
-38	2.375	3.195	3.250	3.730	2.120	.500	1.340	2.063	6 1/4	11/16	3.938
-40	2.500	3.320	3.375	3.855	2.120	.500	1.340	2.063	6 1/2	11/16	3.938
-42	2.625	3.560	3.625	4.070	2.120	.500	1.340	2.063	6 1/2	11/16	4.188
-44	2.750	3.650	3.750	4.320	2.120	.500	1.340	2.063	7 1/2	11/16	4.438
-46	2.875	3.785	3.875	4.450	2.402	.500	1.643	2.366	7 1/2	11/16	4.625
-48	3.000	3.900	4.000	4.700	2.402	.500	1.643	2.366	8"	11/16	5.062
-50	3.125	4.050	4.125	4.825	2.452	.500	1.643	2.366	8"	11/16	5.062
-52	3.250	4.175	4.250	4.950	2.469	.500	1.643	2.366	8 1/4	11/16	5.188
-54	3.375	4.300	4.375	5.075	2.452	.500	1.643	2.366	8 1/2	13/16	5.312
-56	3.500	4.430	4.500	5.200	2.402	.500	1.643	2.366	8 1/2	13/16	5.438
-58	3.625	4.555	4.625	5.325	2.452	.500	1.643	2.366	8 1/2	13/16	5.562
-60	3.750	4.680	4.750	5.450	2.402	.500	1.643	2.366	8 3/4	13/16	5.687
-62	3.875	4.805	5.125	5.575	2.452	.500	1.643	2.366	8 3/4	13/16	5.812
-64	4.000	5.150	5.250	5.950	2.452	.500	1.643	2.366	9"	13/16	6.062
-72	4.500	5.680	5.750	6.450	2.552	.500	1.643	2.366	9 1/2	13/16	6.500
-80	5.000	5.930	6.000	6.700	2.552	.500	1.643	2.366	10"	15/16	6.812

NOTE:
1. MAX BORE = GASKET - .250 INCH. O.D.



REV	ECN#	DATE	REV BY
1	2088	5/12/10	AK

FLEX - A - SEAL
P.O. BOX 184 / 1 JACKSON ST.
ESSEX JUNCTION, VT 05453
(802) 878-8307

STYLE 75P/73P
STATIONARY DUAL MULTI-SPRING OR
WELDED METAL BELLOWS INBOARD
CARTRIDGE SEAL WITH PUMPING RING

DWG.#: **SK1853**

REV. **1**