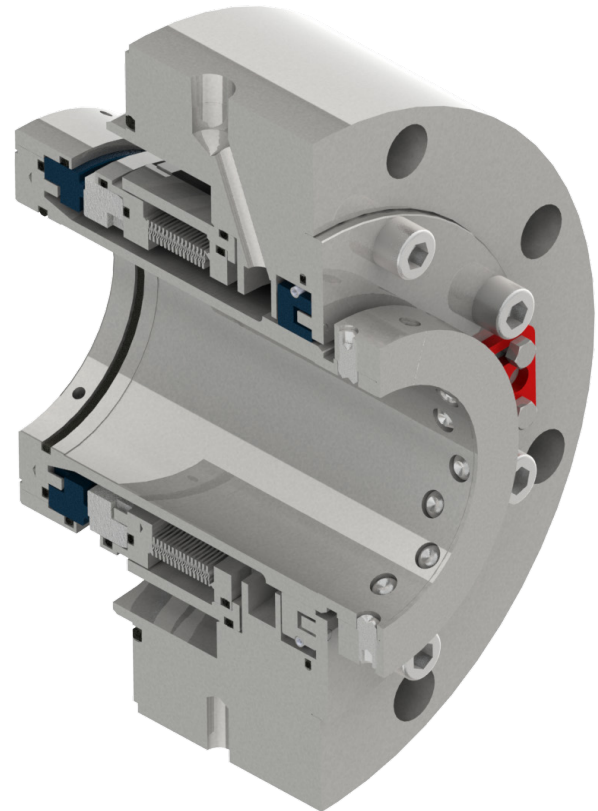


# TRIPLE-PLY BELLOWS CARTRIDGE SEAL

## FOR HIGH PRESSURE CRUDE OIL APPLICATIONS

Now there is a true high pressure bellows solution for one of the toughest oil and gas pipeline challenges: sealing crude oil under high pressures. Flexaseal brings its state-of-the-art, engineered edge welded metal bellows knowledge and capabilities to this demanding service.

- API 682-compliant design is heavy-duty with a long sealing life and easy repairability.
- Exclusive triple-ply welded bellows technology operates in pressures up to 1500 psig while accommodating significant axial movement.
- All seal elastomers are static, eliminating dynamic O-ring wear and damage.
- **FLEXdrive Torsional Drive System** uses a drive lug design to positively drive rotating seal components and eliminates torsion loads on the face energizing elements.
- Choose from three (3) standard secondary bushing arrangements to accommodate Plans 65A and 66A.
- **STEALTH Proactive Seal Health Monitoring System** Sensor technology for remote equipment monitoring.



### MATERIALS OF CONSTRUCTION

Seal Faces	Sintered Silicon Carbide
Elastomers	FKM standard Other materials upon request
Bellows	Hastelloy® C-276
Metallurgy	316 Stainless Steel
Bushing	Bronze, Carbon

Registered Trademarks:  
Hastelloy® - Haynes International, Inc.

### OPERATING PARAMETERS

Pressure	Up to 1500 psig (103.4 bar)
Temperature	Up to 180°F (82°C)
Speed	Up to 3600 RPM
Shaft Sizes	Up to 5.50" (139.7mm)

\* Maximum temperature/speed/pressure/runout indicates operating extremes independently and does not imply the seal will function at these extremes at the same time.