

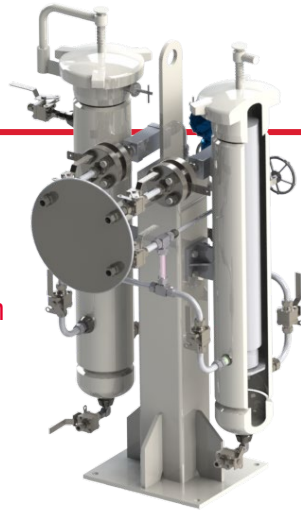
## SEAL SUPPORT CAPABILITIES

Choosing the correct seal support system for your application – whether liquid or gas, extreme temperatures, abrasives, or other volatile conditions – is crucial for system reliability. Support system designs can include barrier or buffer fluid reservoirs, filtration systems, heat exchangers, and/or gas panels. Flexaseal Engineered Seals and Systems has the expertise to guide you in selecting the best option for your sealing challenge.

### FILTRATION

#### HighFlow Series

API 682 Plan 12 Seal Filtration



Up to 75 GPM flow rate  
Filter elements 3 & 10 micron, absolute rated  
Two closure designs available, Yale-type threaded cap and bolted flange  
Filter systems designed to ASME Sec. VIII, div. 1  
**Standard delivery: 6 weeks**



#### Cyclone Separators

API 682 Plan 31 Seal Filtration

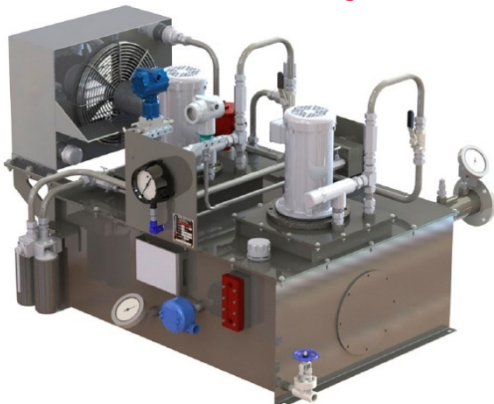
API 682 Plan 31 Cyclone Separator provides lower pipe stress when inline mounted, improves circulation, and reduces temperature at the seal faces, all while offering operating pressures up to 3000 psi / 207 bar.

**Standard delivery: in stock**

### LUBE OIL SYSTEM

#### Lube Oil System

For single and dual seal configurations



Configured for ease of maintenance  
Reduces lubrication piping and facilitates pump maintenance  
Flu-flo pump protection and system pressure control valves  
Top entry heating element

- Eliminates requirement to drain reservoir when replacing heating element
- Mitigates flooding of heater control head associated with side entry design

**Standard delivery: 8 weeks**

## BARRIER FLUID RESERVOIRS

### API 682 Plan 52 and 53A

#### Liquid Buffer / Barrier Fluid

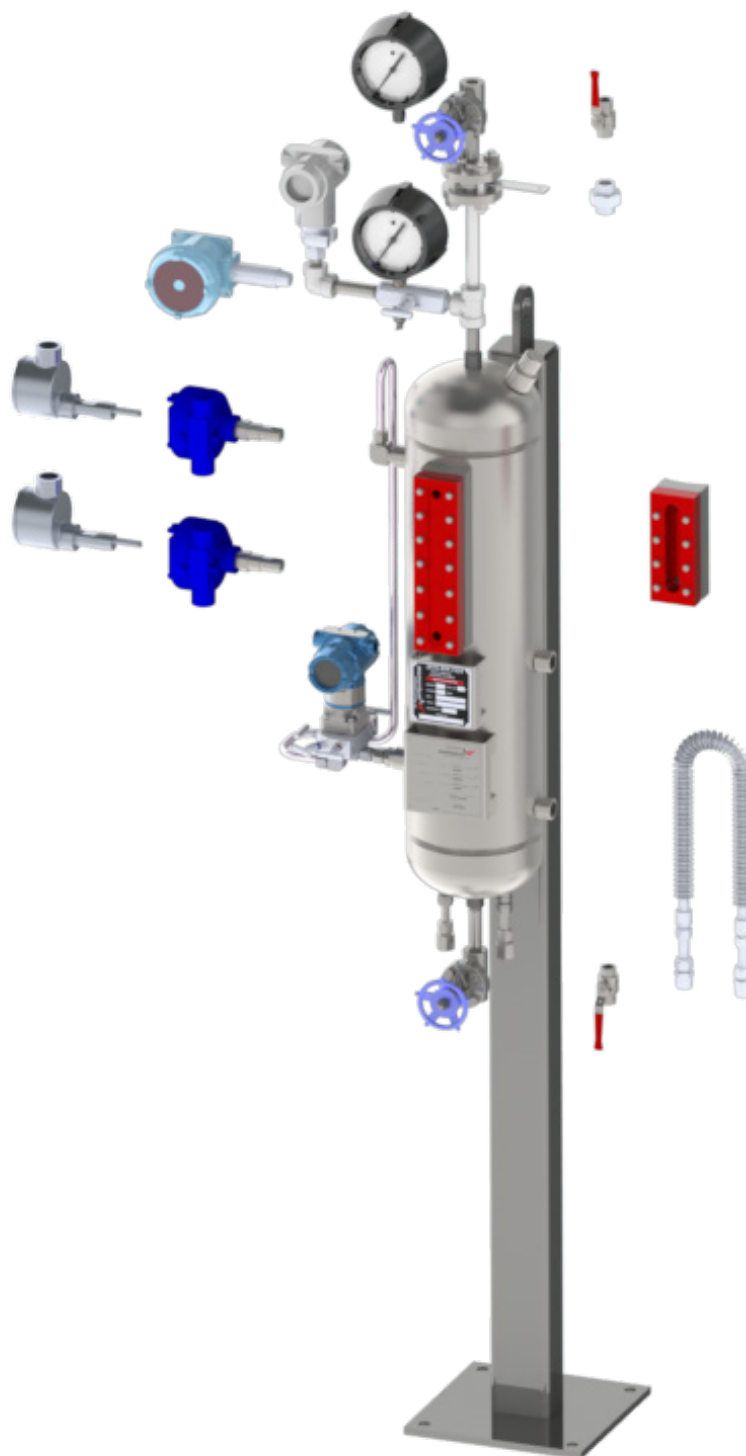
MP52 supports liquid buffer fluid for a containment seal chamber that is at a pressure less than the primary seal chamber pressure.

MP53A supplies a liquid barrier fluid to the dual seal assembly at a higher pressure than the seal chamber.

### FEATURES

- System designed to ASME code Section VIII Div. I, Section IX Weld Procedures
- ASME U stamp available National Board DFAR compliant materials
- Designed to MAWP of pump
- Removable head available

**Standard delivery: 4-6 weeks**

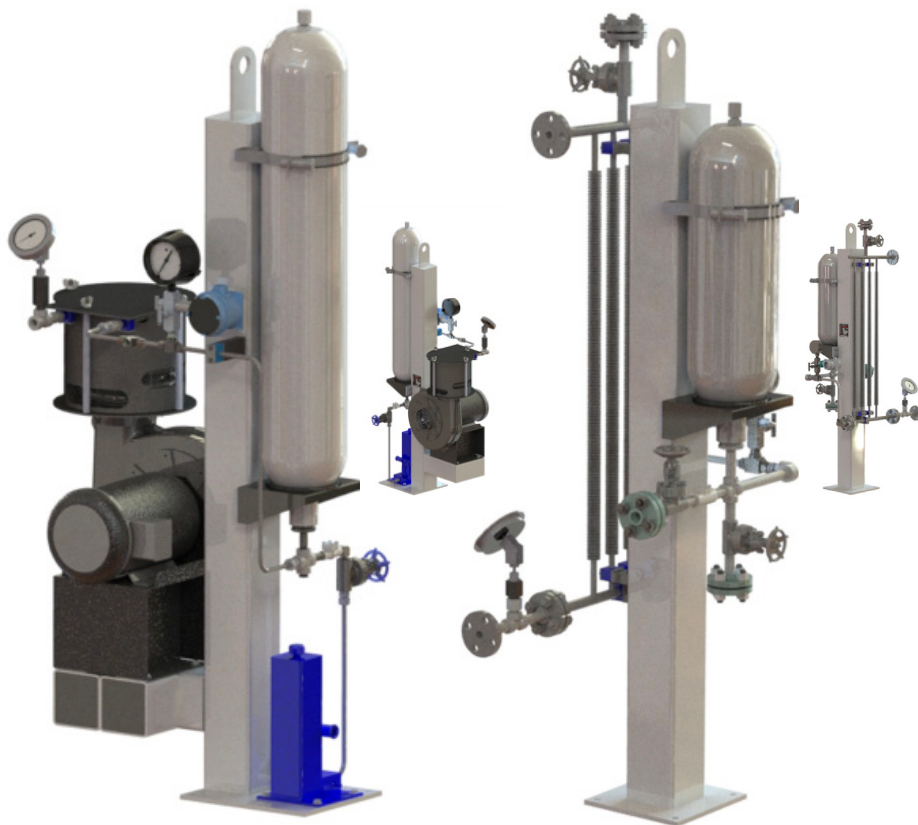


## API 682 Plan 53B

External barrier fluid pressurized by a bladder accumulator. Supplies clean barrier fluid to the dual seal at a pressure greater than the seal chamber.

### FEATURES

- U stamp accumulator standard
- 5-10 gallon capacity
- Air or water cooled available
- Integral barrier fluid make up pump



53B ACCUMULATOR

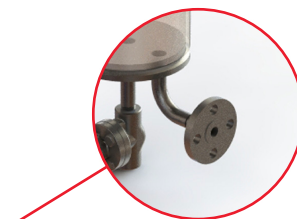
53B NATURAL CONVECTION

## API 682 Plan 53C

External barrier fluid pressurized by a piston accumulator. Supplies clean barrier fluid to the dual seal at a pressure greater than the seal chamber.

### FEATURES

- Integral head porting eliminates pigtail design
- U stamp coded vessel design
- Magnetic level indication available



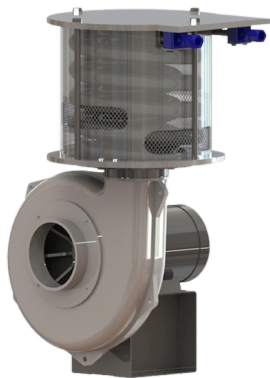
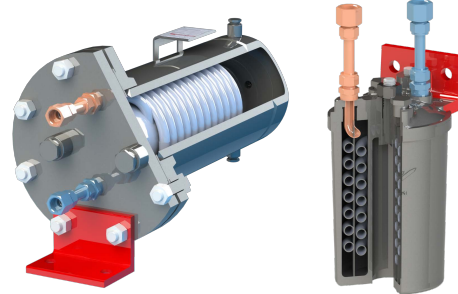
53C

## HEAT EXCHANGERS

### **SHELL**COOL

For API 682  
Plans 21, 23, 55

- Removable head and bundle for easy maintenance
  - Double wrap tubing for increased cooling surface area
  - Heavy-duty shell design with internal baffle
- Standard delivery: 2-4 weeks

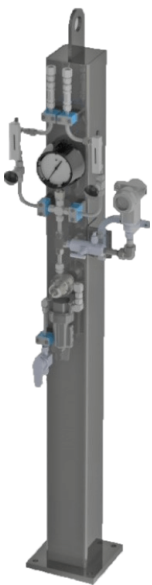


### **Turbo**COOL

For API 682  
Plans 21, 23, 55

- Heavy duty aluminum blower impeller and housing for extended service life and corrosion resistance
  - Self-venting design for easy commissioning
  - Double wrap, finned tubing for increased cooling service area
  - High performance, CFD-optimized, heat exchanger cowling
  - Eliminates cooling water
- Standard delivery: 2-4 weeks

## SEAL MONITORING SYSTEMS



### **MP72**

For API 682 Plan 72 and in tandem with Plans 75 & 76

Buffer gas used with an unpressurized Dual, dry running containment seal or with a segmental bushing, to dilute leakage for reduced emissions.  
Standard delivery: 4-6 weeks



### **MP76**

For API 682 Plan 76 and in tandem with Plan 72

Leakage collection system for an unpressurized dual, dry running containment seal in non-condensing applications. May be used with an API 682 Plan 72 buffer gas.  
Standard delivery: 4-6 weeks

### **MP75**

For API 682 Plan 75

Detects and warns of excessive leakage from primary seal.  
Standard delivery: 4-6 weeks



### **MP65**

For API 682 Plan 65

Detects and warns of excessive leakage from primary seal.  
Standard delivery: 4-6 weeks



FULL API 610 AND 682 COMPLIANT (LATEST EDITION). CANADIAN CRN AVAILABLE.