

# ENSURING PURITY FROM SOURCE TO TAP

## NSF 61 Certified Mechanical Seal Assemblies

### THE FLEXASEAL DIFFERENCE: FULL ASSEMBLY CERTIFICATION



We provide certification for the entire mechanical seal assembly.

Our rigorous testing covers faces, metallurgy, elastomers, and assembly products to meet strict lead and chemical leaching requirements for the entire cartridge.

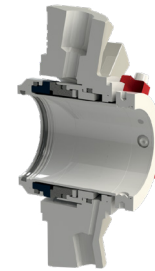


#### STYLE 85



##### Two-Piece Split Cartridge Mechanical Seal

- **Fully Split Design:** Installs in minutes without dismantling equipment, saving hours of downtime.
- **Factory-Tested Seal:** Each Style 85 is pressure tested before it leaves the factory, ensuring you have a reliable seal before it touches your equipment.
- **Long-Term Reliability:** Engineered to handle the shaft runout and vibration common in large water movers.



#### STYLE VSMS



##### Stationary Multi-Spring Single Cartridge Pusher Seal

- **Robust Construction:** Stable, stationary multi-spring design that resists clogging from sediment or particles.
- **Universal Fit:** Fits standard ANSI, Vertical Turbine, and other pumps used throughout treatment plants.
- **Certified Safety:** Ensures your primary process pumps are fully compliant with drinking water standards.

BE COMPLIANT. SECURE YOUR WATER SUPPLY WITH FLEXASEAL.



sales@flexaseal.com  
(802) 878-8307

291 Hurricane Lane  
Williston, VT 05495