

## SINGLE-SPRING ELASTOMER BELLWS SEAL

### General Purpose, Rotating Single Spring

The **Flexaseal Type BA**, an unbalanced general purpose seal, is an industry standard across many OEM equipment throughout the world. It serves well in a broad range of applications and provides a cost-effective sealing option.

The static seal between the elastomer bellows and the shaft coupled with the free movement of the bellows prevents sliding action and shaft damage from fretting.

- Automatic compensation for normal shaft run-out and axial movements
- Unbalanced design
- Non-clogging single-spring
- Bi-directional rotation
- Shaft remains protected over entire seal length
- Can be applied with nearly any type of mating ring
- Equivalent\* to Eagle Burgmann MG1, MG12, MG13

\* Flexaseal Engineered Seals and Systems, LLC supplies replacement seals to fit a wide range of OEM equipment. Any use of other manufacturer names, marks, or model numbers is for reference only.



## MATERIALS OF CONSTRUCTION

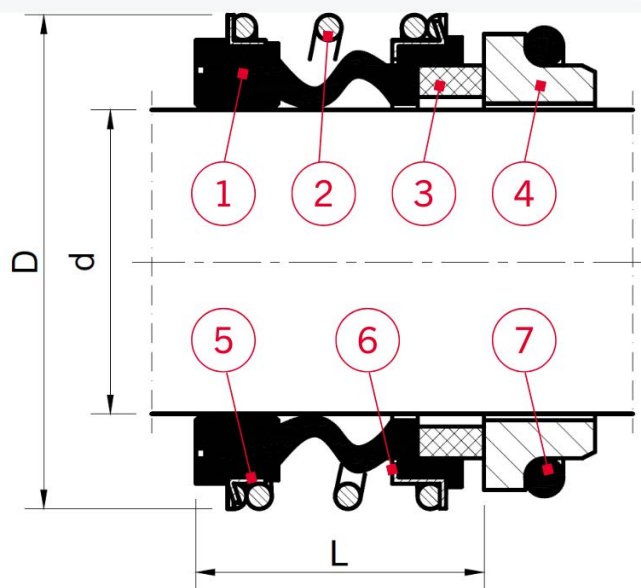
Standard Metallurgy	304 SS, 316 SS, 18-8 Stainless, Alloy C-276
Seal Faces	Carbon graphite (resin impregnated), Silicon Carbide, Tungsten Carbide
Stationary Seats	Alumina ceramic, Ni-resist, Silicon Carbide, Tungsten Carbide
Bellows	Neoprene, NBR, FKM, EPDM, TFE/P
Secondary Seal	Neoprene, NBR, FKM, EPDM, TFE/P

## OPERATING PARAMETERS

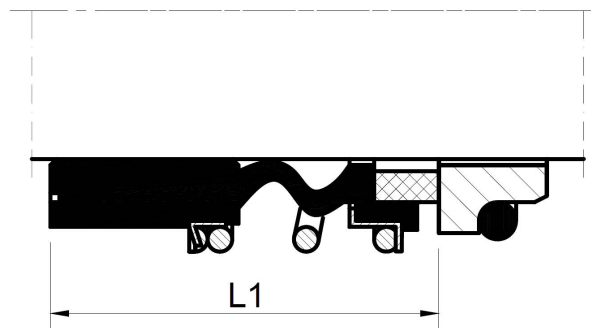
Max Temp	-4°F to 285°F (-20°C to 140°C)
Max Pressure	170 psi (12 bar)
Max Speed	2000 FPM (10 m/s)

Max Temperature / pressure / speed indicate operating extremes independently and do not imply the seal will function at these extremes at the same time. Contact Flexaseal if in doubt.

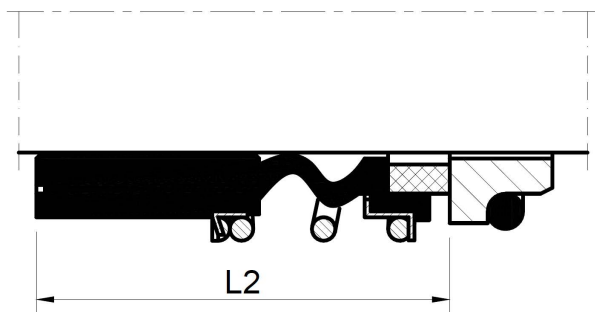
## ROTARY BELLOWS ARRANGEMENT



TYPE BA



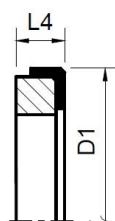
TYPE BA2



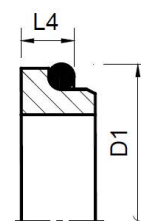
TYPE BA3

Item	Description
1	Bellows
2	Spring
3	Seal Face
4	Seat
5	Spring Collar
6	Spring Collar
7	O-ring or Cup Rubber

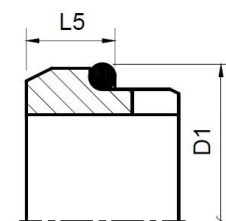
## SEAT ALTERNATIVES



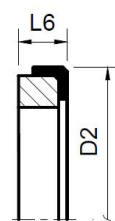
G60



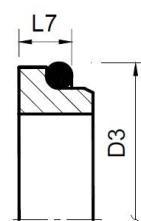
G6



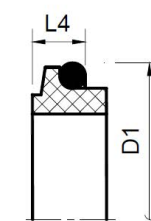
G9



G50



G4



G606

Consult Flexseal for the appropriate materials, rotary, and seat selection for your application.

Tabulated standard dimensions for Type BA/BA2/BA3 seals can be found on the next page.

## TYPE BA DIMENSIONS

d	D	D1	D2	D3	L	L1	L2	L3	L4	L5	L6	L7
10	22.5	21	24.6	19.2	14.5	25.9	33.4	25	6.6	10	9	6.6
12	25	23	27.8	21.6	15	25.9	33.4	25	6.6	10	9	5.6
14	28.5	25	30.95	24.6	17	28.4	33.4	25	6.6	10	10.5	5.6
15	28.5	27	30.95	24.6	17	28.4	33.4	25	6.6	10	10.5	6.6
16	28.5	27	30.95	28	17	28.4	33.4	25	6.6	10	10.5	7.5
18	32	33	34.15	30	19.5	30	37.5	25	7.5	11.5	10.5	8
20	37	35	35.7	35	21.5	30	37.5	25	7.5	11.5	10.5	7.5
22	37	37	37.3	35	21.5	30	37.5	25	7.5	11.5	10.5	7.5
24	42.5	39	40.5	38	22.5	32.5	42.5	25	7.5	11.5	10.5	7.5
25	42.5	40	40.5	38	23	32.5	42.5	25	7.5	11.5	10.5	7.5
28	49	43	47.65	42	26.5	35	42.5	33	7.5	11.5	12	9
30	49	45	50.8	45	26.5	35	42.5	33	7.5	11.5	12	10.5
32	53.5	48	50.8	48	27.5	35	47.5	33	7.5	11.5	12	10.5
33	53.5	48	54	50	27.5	35	47.5	33	7.5	11.5	12	11
35	57	50	54	52	28.5	35	47.5	33	7.5	11.5	12	11
38	59	56	57.15	55	30	36	46	33	9	14	12	10.3
40	62	58	60.35	58	30	36	46	33	9	14	12	10.8
42	65.5	61	63.5	60	30	36	51	51	9	14	12	12
43	65.5	61	63.5	62	30	36	51	51	9	14	12	12
45	68	63	63.5	64	30	36	51	51	9	14	12	11.6
48	70.5	66	66.7	68.4	30.5	36	51	51	9	14	12	11.6
50	74	70	69.85	69.3	30.5	36	50.5	50.5	9.5	15	13.5	11.6
53	78.5	73	73.05	72.3	33	36.5	59	59	11	15	13.5	12.3
55	81	75	76.2	75.4	35	36.5	59	59	11	15	13.5	13.3
58	85.5	78	79.4	78.4	37	41.5	59	59	11	15	13.5	13.3
60	88.5	80	79.4	80.4	38	41.5	59	59	11	15	13.5	13.3
65	93.5	85	92.1	85.4	40	41.5	69	69	11	15	16	13
68	96.5	90	95.25	91.5	40	41.5	68.7	68.7	11.3	18	16	13.7
70	99.5	92	95.25	92	40	48.7	68.7	68.7	11.3	18	16	13
75	107	97	101.6	99	40	48.7	68.7	68.7	11.3	18	16	14
80	112	105	114.3	104	40	48	78	78	12	18.2	20	15
85	120	110	117.5	109	41	46	76	76	14	18.2	20	14.8
90	127	115	123.85	114	45	51	76	76	14	18.2	20	14.8
95	132	120	127	120.3	46	51	76	76	14	17.2	20	15.8
100	137	125	133.35	123.3	47	51	76	76	14	17.2	20	15.8

Dimensions in mm