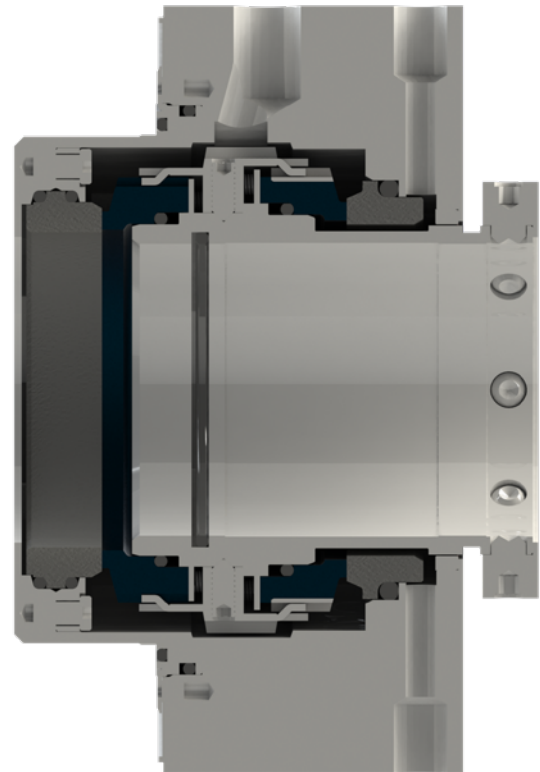


HEAVY DUTY ROTATING MULTI-SPRING DUAL CARTRIDGE SEAL *FOR API 682 APPLICATIONS*

The **Flexaseal Style 90A** is designed specifically to conform to API 682 Category 2 Applications for Midstream and Downstream Oil and Gas Applications where a Pressurized Dual Arrangement is Desired. Standard design features include:

- Oversized Monolithic Seal Faces for superior heat dissipation and durability
- Tang Drive System for reliable face torque transfer and reduced O-Ring hang up
- Heavy Duty Springs to mitigate process debris clogging and reduce spring quantity
- Cushion Mounted Primary Seat to increase reliability in harsh services
- Retained Seal Faces for pressurized barrier systems
- Optimized Pumping Ring for higher barrier fluid flow and better seal cooling
- OD Pressure Design for enhanced solids handling, barrier fluid distribution and seal reliability



Flush Plans 11/53A/53B/54

MATERIALS OF CONSTRUCTION

Rotary Faces	Silicon Carbide
Stationary Faces	Carbon, Silicon Carbide, Tungsten Carbide
Springs	Hastelloy C276*
Metal Parts	316 Stainless Steel
O. Rings	Viton®, Ethylene Propylene, AFLAS, Perfluoroelastomer

OPERATING PARAMETERS

Max Temp	400°F
Max Pressure	450 PSIG
Max Speed	4500 FPM

* Max Temperature / pressure / speed indicate operating extremes independently and do not imply the seal will function at these extremes at the same time. Contact Flexaseal if in doubt.

HEAVY DUTY ROTATING MULTI-SPRING DUAL CARTRIDGE SEAL

FOR API 682 APPLICATIONS

DESIGN FEATURES & BENEFITS

