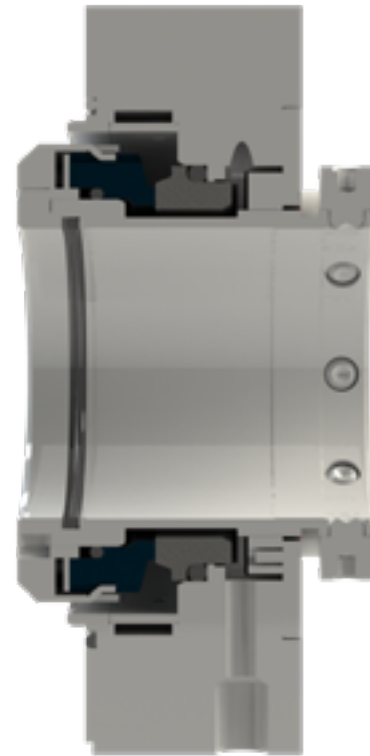


## HEAVY DUTY ROTATING MULTI-SPRING SINGLE CARTRIDGE SEAL *FOR API 682 APPLICATIONS*

The **Flexaseal Style 59A** is designed specifically to conform to API 682 Category 2 Applications for Midstream and Downstream Oil and Gas Applications. Standard design features include:

- Oversized Monolithic Seal Faces for superior heat dissipation and durability
- Circumferential Flush System to evenly distribute cooling flush flow around the seal faces
- Convertible Outboard Bushing for fixed, floating and segmented designs to allow for all types of secondary leakage capture
- Tang Drive System for reliable face torque transfer and reduced O-Ring hang up
- Heavy Duty Springs to mitigate process debris clogging and reduce spring quantity

The 59A is also available with contacting and non-contacting secondary sealing. The Flexaseal FC seal (Available as 59A/FC) provides decades of proven operational reliability as a contacting secondary seal. The Flexaseal FGSA (Available as 59A/FGSA) is our newest lift-off design for API applications that require a non-contacting secondary seal.



### MATERIALS OF CONSTRUCTION

<b>Faces</b>	Premium Grade Resin and Antimony Impregnated Carbons; Nickel Bound Tungsten Carbide; Sintered and Graphite-Loaded Silicon Carbide
<b>Elastomers</b>	FKM, EPDM, TFEP, Buna, Neoprene, Perfluoroelastomers
<b>Metal Parts</b>	316 and 17-4 Stainless Steel <i>Other options available: Super Duplex Stainless Steel, Alloy C-276</i>
<b>Springs</b>	Alloy C-276

### OPERATING PARAMETERS

<b>Max Temp</b>	550°F (290°C)
<b>Max Pressure</b>	450 PSIG
<b>Max Speed</b>	10,000 FPM (50m/sec)

\* Max Temperature / pressure / speed indicate operating extremes independently and do not imply the seal will function at these extremes at the same time. Contact Flexaseal if in doubt.

# HEAVY DUTY ROTATING MULTI-SPRING SINGLE CARTRIDGE SEAL

FOR API 682 APPLICATIONS

## DESIGN FEATURES & BENEFITS

**Tang Drive System** for reliable face torque transfer and reduced O-Ring hang up

**Heavy Duty Springs** to mitigate process debris clogging and reduce spring quantity

**Dynamic O-Ring** protected from Process fluid debris

**Circumferential Flush System** to evenly distribute cooling flush flow around the seal faces

Standard API 682 Gland Connections

**Oversized Monolithic Seal Faces** for superior heat dissipation and durability

**Convertible Outboard Bushing** for fixed, floating and segmented designs to allow for all types of secondary leakage capture

**Large Retained Setting Clips** for Easy Seal Installation and Removal  
Setting Clips are Always with the Seal

**Removable Drive Collar** for Enhanced Repairability.

